

Past Performance

This document provides you with information on past performance.

Past performance is not a reliable indicator of future performance. Markets could develop very differently in the future. It can help you to assess how the fund has been managed in the past and compare it to its benchmark.

Emerging Markets Debt

a sub-fund of Vontobel Fund, Share class HN (hedged), Currency EUR, ISIN LU1683488438

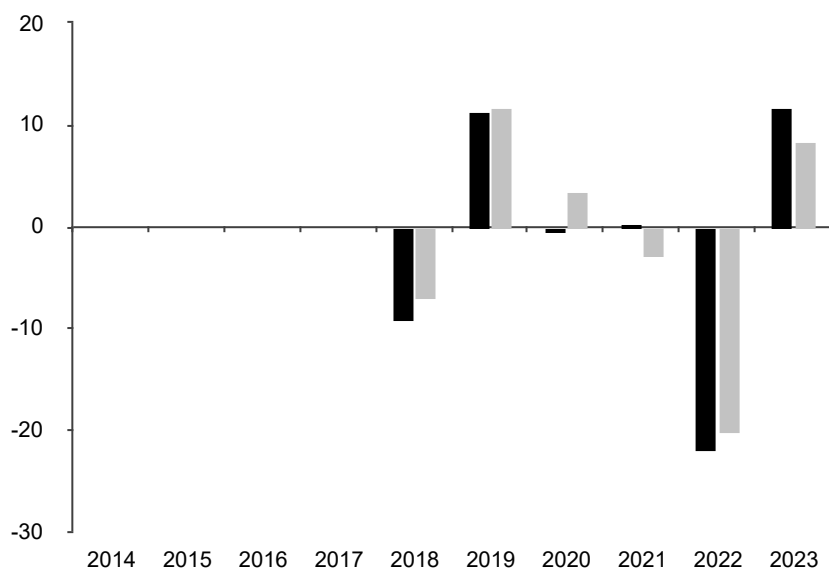
The Commission de Surveillance du Secteur Financier (CSSF) is responsible for supervising Vontobel Asset Management S.A. in relation to this Key Information Document. This Product and its management company Vontobel Asset Management S.A. are authorized in Luxembourg and supervised / regulated by the CSSF. Vontobel Asset Management S.A. is part of Vontobel Group.

This document is accurate as at 08 March 2024.

This chart shows the fund's performance as the percentage loss or gain per year over the last 6 years against its benchmark.

The share class uses the benchmark J.P. Morgan EMBI Global Diversified Index (EUR hedged) for performance comparison only.

* Index - J.P. Morgan EMBI Global Diversified Index (EUR hedged)



Powered by data from FE fundinfo

■ Fund	N/A	N/A	N/A	N/A	-9.10%	11.30%	-0.40%	0.00%	-22.00%	11.70%
■ Index *	N/A	N/A	N/A	N/A	-7.00%	11.70%	3.50%	-2.80%	-20.10%	8.40%