

## Past Performance

This document provides you with information on past performance.

Past performance is not a reliable indicator of future performance. Markets could develop very differently in the future. It can help you to assess how the fund has been managed in the past and compare it to its benchmark.

### Sustainable Swiss Franc Bond

a sub-fund of Vontobel Fund, Share class G, Currency CHF, ISIN LU1206762293

The Commission de Surveillance du Secteur Financier (CSSF) is responsible for supervising Vontobel Asset Management S.A. in relation to this Key Information Document. This Product and its management company Vontobel Asset Management S.A. are authorized in Luxembourg and supervised / regulated by the CSSF. Vontobel Asset Management S.A. is part of Vontobel Group.

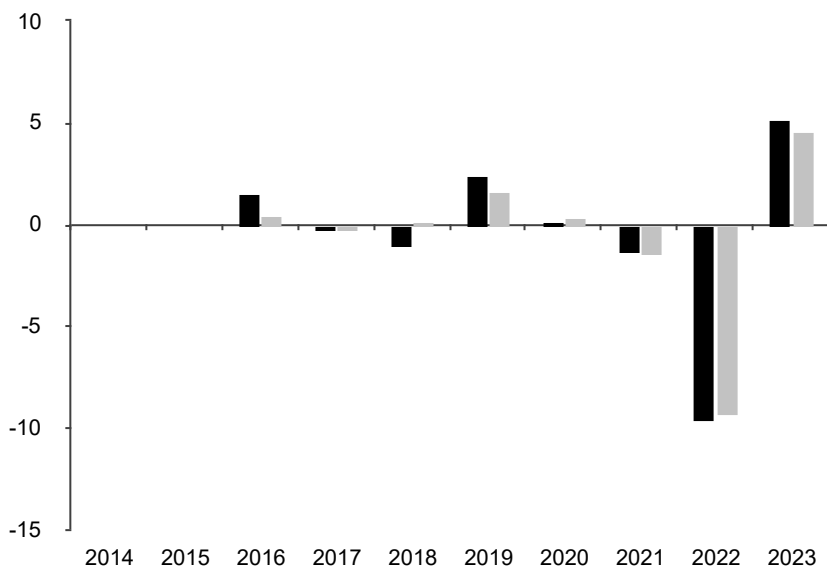
This document is accurate as at 08 March 2024.

This chart shows the fund's performance as the percentage loss or gain per year over the last 8 years against its benchmark.

Past performance is shown in the currency of the share class (CHF).

The sub-fund uses the benchmark SBI® Foreign Rating AAA Total Return for performance comparison only. The benchmark is not consistent with the environmental and social characteristics promoted by the Sub-Fund.

\* Index - SBI® Foreign Rating AAA Total Return



Powered by data from FE fundinfo

■ Fund	N/A	N/A	1.50%	-0.10%	-1.00%	2.40%	0.00%	-1.30%	-9.60%	5.20%
■ Index *	N/A	N/A	0.50%	-0.20%	0.10%	1.60%	0.40%	-1.40%	-9.30%	4.60%