

This document provides you with information on past performance.

Past performance is not a reliable indicator of future performance. Markets could develop very differently in the future. It can help you to assess how the fund has been managed in the past and compare it to its benchmark.

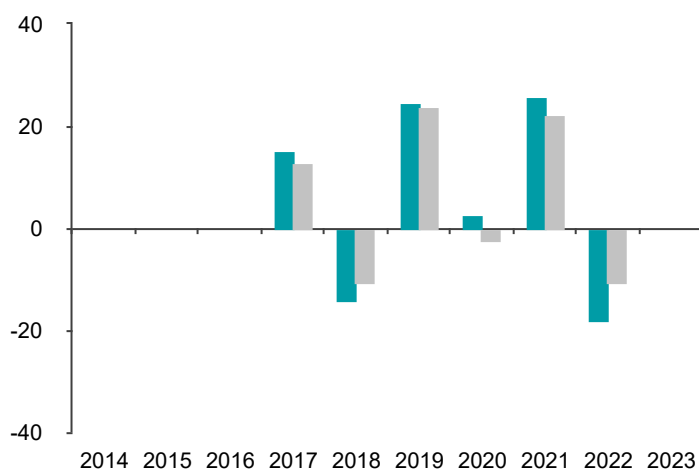
VIA Smart-Equity Europe (the "Fund"), EUR Super Institutional LU1369528622

This product is managed by Eric Sturdza Management Company S.A. (the "Manager"), a member of the Eric Sturdza Group, which is authorised in Luxembourg and regulated by the Commission de Secteur Financier (CSSF). For more information regarding this product, please refer to [www.via-am.com](http://www.via-am.com) or call +33 (0)1 85 73 22 46.

Date of Production: 07 February 2024

## Past Performance

This chart shows the fund's performance as the percentage loss or gain per year over the last 7 years against its benchmark.



■ Fund  
■ Index \*

## Performance Table

	2014	2015	2016	2017	2018	2019	2020	2021	2022	2023
■ Fund	N/A	N/A	N/A	15.1%	-14.3%	24.6%	2.7%	25.9%	-18.2%	N/A
■ Index *	N/A	N/A	N/A	13.1%	-10.6%	23.8%	-2.2%	22.2%	-10.4%	N/A

You should be aware that past performance is not a guide to future performance.

Fund launch date: 2016-03-23

Share/unit class launch date: 2016-03-23

Performance is calculated in EUR

The chart shows how much the Fund increased or decreased in value as a percentage in each year, net of charges (excluding entry charge), and net of tax.

Past performance is not a guide to future performance. The value of your investment may go down as well as up and you may not get back the amount you originally invested.

Performance is shown after deduction of ongoing charges and performance fees (if applicable). Any entry or exit fees are excluded from the calculation.

Eric Sturdza Management Company S.A.

+352 2899 1910

[esmc@ericsturdza.lu](mailto:esmc@ericsturdza.lu)

For additional information regarding the VIA Smart-Equity Europe EUR Super Institutional or other classes of the VIA Smart-Equity Europe please contact [info@ericsturdza.com](mailto:info@ericsturdza.com).

[ericsturdza.lu](http://ericsturdza.lu)

**This Fund is authorised in Luxembourg and regulated by the Commission de Surveillance du Secteur Financier. This document is accurate as at 07 February 2024.**

\* Index - MSCI Daily Net TR Europe Euro Index