

Product

This document provides you with information on past performance.

Past performance is not a reliable indicator of future performance. Markets could develop very differently in the future. It can help you to assess how the fund has been managed in the past and compare it to its benchmark.

FISCH BOND GLOBAL CORPORATES FUND

A subfund of the FISCH Umbrella Fund

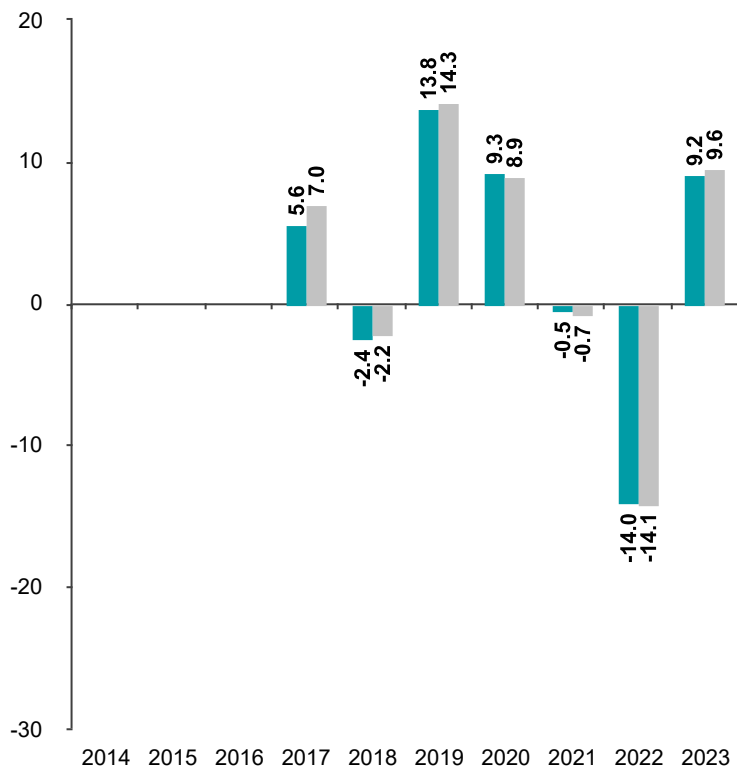
Shareclass AD (LU1461846344)

This product is managed by UNIVERSAL-INVESTMENT-LUXEMBOURG S.A., which is authorized in Luxembourg, and regulated by the Commission de Secteur Financier (CSSF). For more information on this product, please refer to www.universal-investment.com or Call +352 261502-1.

Publication Date 19/01/2024

Past Performance

This chart shows the fund's performance as the percentage loss or gain per year over the last 7 years against its benchmark.



You should be aware that past performance is not a guide to future performance.

Fund launch date: 2014-06-30

Share/unit class launch date: 2016-07-29

Performance is calculated in USD

The chart shows how much the Fund increased or decreased in value as a percentage in each year, net of charges (excluding entry charge), and net of tax.

* Index - 65% Bloomberg Global Aggregate Corporate, 25% J.P. Morgan CEMBI Broad Diversified Composite, 10% ICE BofA Developed Markets High Yield



Performance Table

	2014	2015	2016	2017	2018	2019	2020	2021	2022	2023
Fund	N/A	N/A	N/A	5.6%	-2.4%	13.8%	9.3%	-0.5%	-14.0%	9.2%
Index *	N/A	N/A	N/A	7.0%	-2.2%	14.3%	8.9%	-0.7%	-14.1%	9.6%