



## Synchrony Swiss Government Bonds

ISIN CH0004015282

January 2025

### Fund Profile

- Investment in direct lines in Confederation bonds and other maturities guaranteed by a Swiss public legal authority
- Index fund based on a quantitative method
- Objective: replicate the performance of the Swiss government bond index SBIDGT®

### Technical information

Net Asset Value	CHF 95.28
Fund assets (m)	CHF 42.50
Volatility (5 years)	7.59%
Average yield	0.45%
Modified duration	12.3 Years
Average coupon	2.45%
Gross yield	1.6%
Tracking error (5 years)	0.49
Correlation (5 years)	1.00
Beta (5 years)	1.01
Last distribution (gross)	CHF 1.50

### Performance in CHF

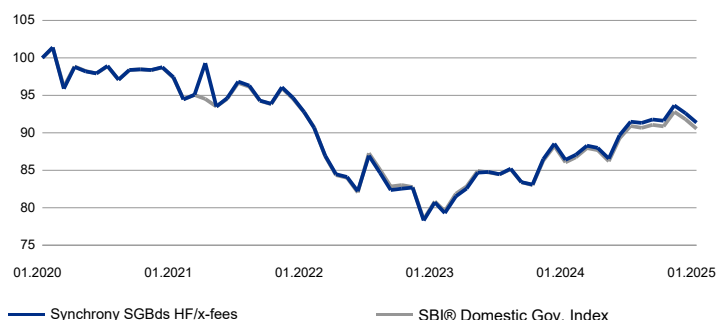
%	2020	2021	2022	2023	2024	5 Years	YTD	Jan 25
Fd NAV	1.98	-4.42	-17.57	12.74	4.26	-10.06	-1.38	-1.38
Fd x-fees	2.29	-4.12	-17.30	13.09	4.58	-8.64	-1.36	-1.36
Index	2.12	-4.23	-17.01	12.47	4.05	-9.46	-1.38	-1.38

Total Return Performance  
Benchmark: SBI® Domestic Government Index

### Fund / Class features

Fund domicile	Switzerland
Custodian bank	BCV
Portfolio Manager (BCGE)	Sylvain Rossier
Class launch date	13.03.1996
Class base currency	CHF
Class all in fee	0.30%
Front/back-end load	0.50%
Class TER as of 15.09.2024	0.32%
Year-end closing date	15 March
Distribution	June
Rating average	AAA
Liquidity	Daily
Cut-off	11:00

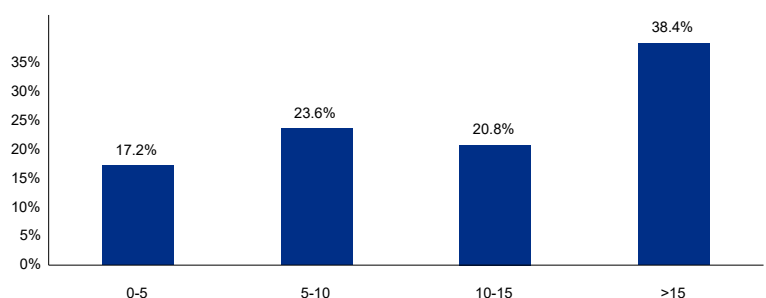
### Indexed historical performance



### Major Holdings

Emprunts Confédération suisse	81.2%
Banque de lettre de gage	11.7%
Centrale de lettre de gage	6.4%

### Maturity of bonds in the portfolio



The SBI® index is the intellectual property (including registered trademarks) of SIX Index AG, Zurich, Switzerland (hereafter: SIX) and/or its licensors (Licensors), which is used under license. The fund is neither sponsored nor promoted, distributed or in any other manner supported by SIX and/or its Licensors. SIX and its Licensors do not give any warranty, and exclude any liability (whether in negligence or otherwise) with respect thereto generally or specifically in relation to any errors, omissions or interruptions in the index or its data.

This document is a monthly marketing sheet. The information in this document is based on reliable data and statistics. The performances mentioned are provided for information purposes only and are not guaranteed for the future. Past performance should not be taken as an indicator of current or future performance. The performance does not take into account commissions and fees charged upon the issuance and redemption of units. Neither Banque Cantonale de Genève nor the BCGE Group can be held responsible for them. The annual and semi-annual reports, the prospectuses with integrated fund contracts, as well as the key information for investors of the investment funds managed or sold by BCGE can be obtained free of charge from BCGE, Geneva, or from the fund management company GERIFONDS SA ([www.gerifonds.ch](http://www.gerifonds.ch)).